



LED Digital Clocks

DC Series

The DC series covers four elegant and very slim digital clocks in 7 segment LED technique for displaying time and date. They differ by the character height of 57 or 100 mm and by four or six-digit time and date display. As a standard function the stopwatch is included in all models. The DC series can be operated in 4 free selectable modes:

- "Stand-alone" operation with internal quartz or with external DCF radio time code receiver
- Slave clock operation, controlled by minute impulses or by self-setting MOBALine code.

Numerous execution variants and options make it possible to fulfill individual customer's requests:

- LED display in red, green, blue or yellow
- Single- or double-sided clocks
- Aluminium housings, black or silver-anodised or in any RAL colour
- Wall mounting, ceiling suspension or wall bracket mounting.

Options:

- Outdoor sensor for temperature display
- Auxiliary interface for RS 232, RS 485 and IRIG-B
- External buttons for stopwatch
- Infrared remote control for easy access to all functions, for the configuration as well as for the stopwatch function.

DC Series – individual variants



Display Features

- Time display in four (HH:MM) or six digits (HH:MM SS), either 12 or 24 hours format.
- Date display in four (DD.MM) or six digits (DD.MM.YY).
- Alternating display of time, date and temperature, with adjustable time period for the different figures in the range of 0 – 60 sec.
- Temperature display in °C or °F in combination with an external temperature sensor.
- 7 segment LED with 57 mm (seconds 38 mm) digit height for a viewing distance up to 25 m or 100 mm (seconds 57 mm) digit height for a viewing distance up to 40 m.
- Display available in the colours red, green, blue or yellow.
- Sensor controlled automatic or manual adjustment of the display brightness.

Mechanics

- Anti-reflection front cover made of plexi-glass including a filter layer for best readability over a wide viewing angle.
- Elegant and very slim clock frame, made of black or silver anodised aluminium profiles. Any RAL colour available on request.
- Single- or double-sided execution for wall mounting, ceiling suspension or wall bracket mounting.



- Easy installation and time-saving maintenance due to the back panel which is designed as a mounting plate, on which the clock can be snapped-on and secured with a screw.



Synchronisation

- Autonomous operation with internal quartz time base with programmable, automatic seasonal time change or with external DCF 77 radio time code receiver.
- Slave clock operation with synchronisation by (un)polarised minute-, half-minute- or second-impulses. Alternatively self-setting operation by MOBALine code. Option available is the synchronisation by RS 232, RS 485 or IRIG-B.

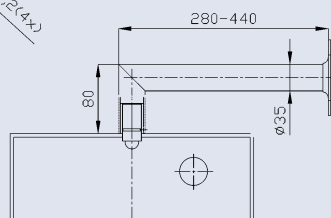
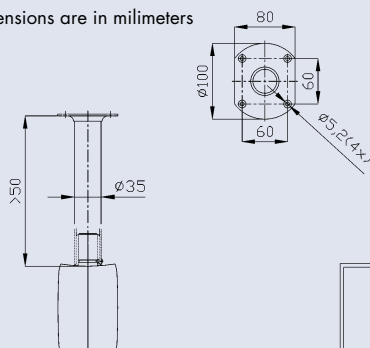
Stopwatch

- Counting upwards from zero up to 24 hours
- Counting downwards from a specific value either with stop or with automatic restart at zero or counting into negative values
- Display of time intervals, freezing of display, cumulating of time intervals
- Counting steps of 1 minute, 1 second or 1/100 seconds
- Operation via internal buttons, external buttons or IR remote control unit

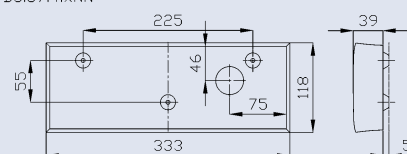
Configuration

Setting of the clock parameters by means of two push buttons on top of the clock frame or via IR remote control unit

All dimensions are in milimeters



DC.57.4.xNN



Additional 6 mm distance elements shipped with DC

DC.57.6.xNN

